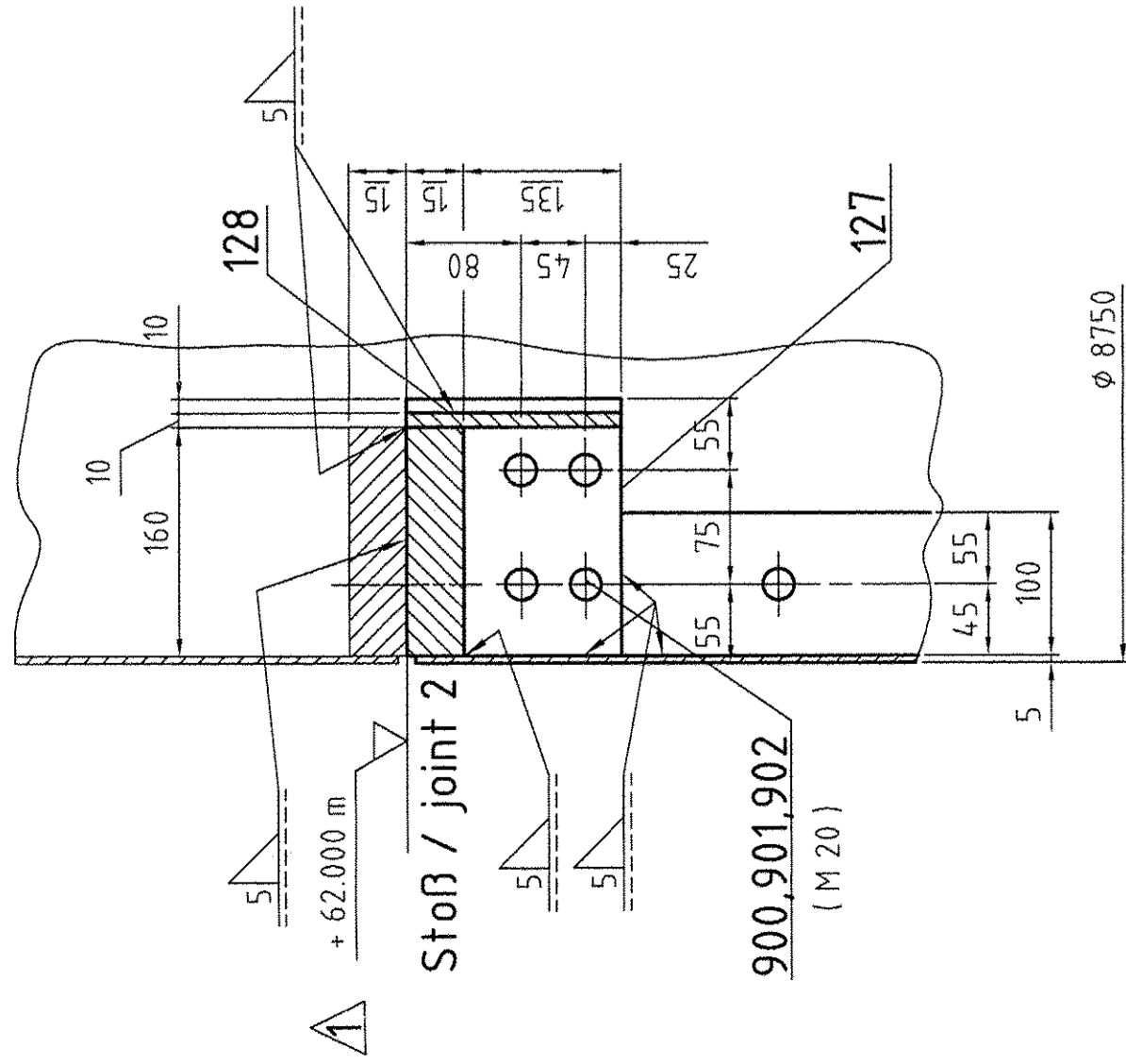


Detail "X"
M1:5

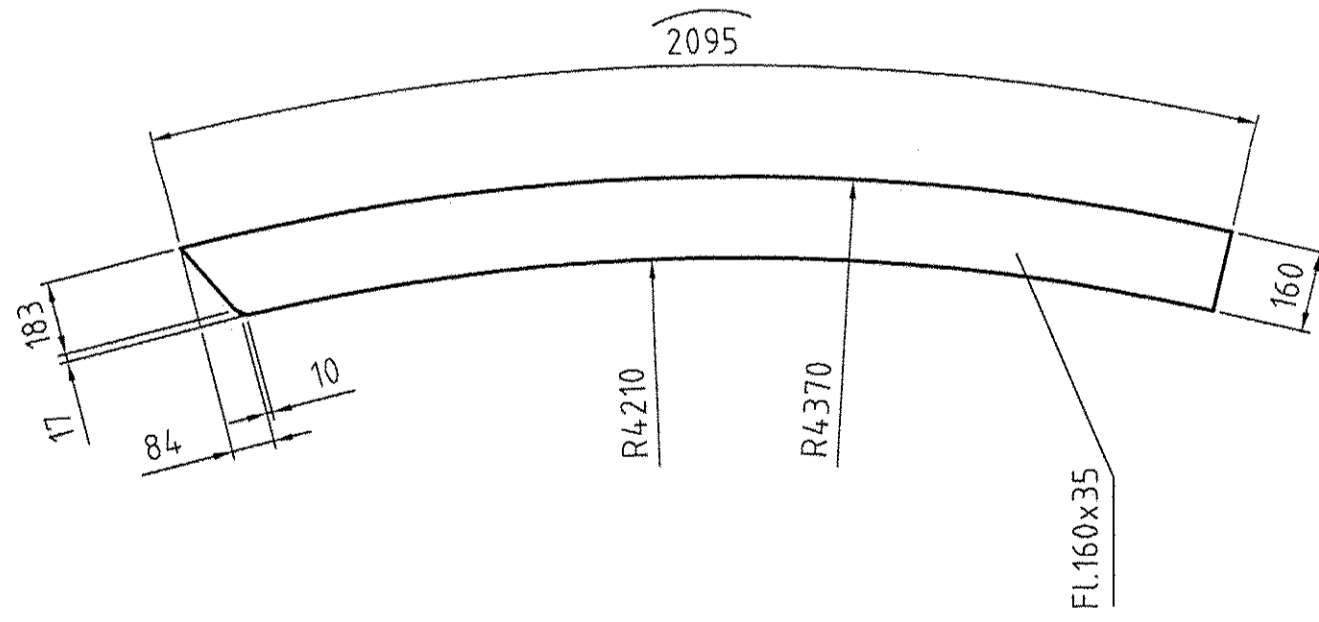
M 1:5



Detail Pos. 141

$$\sum_{i=1}^n$$

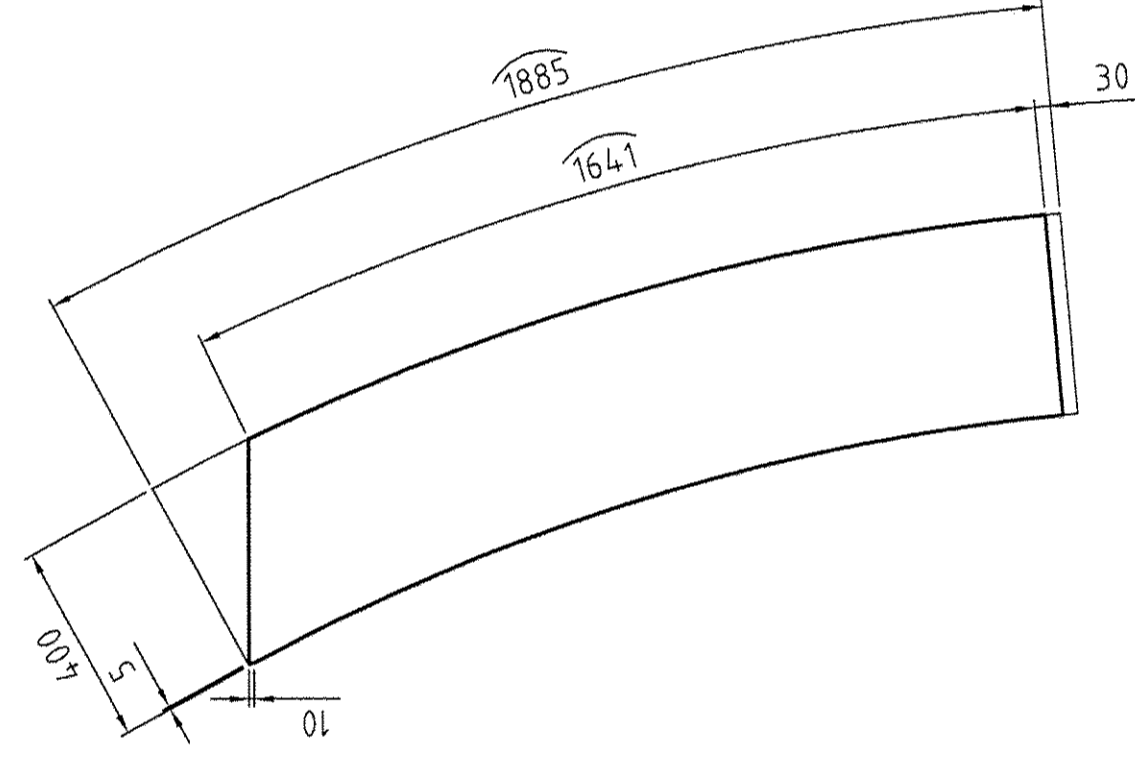
2 x fertigen



Detail Pos. 137 (VK3)

41:15

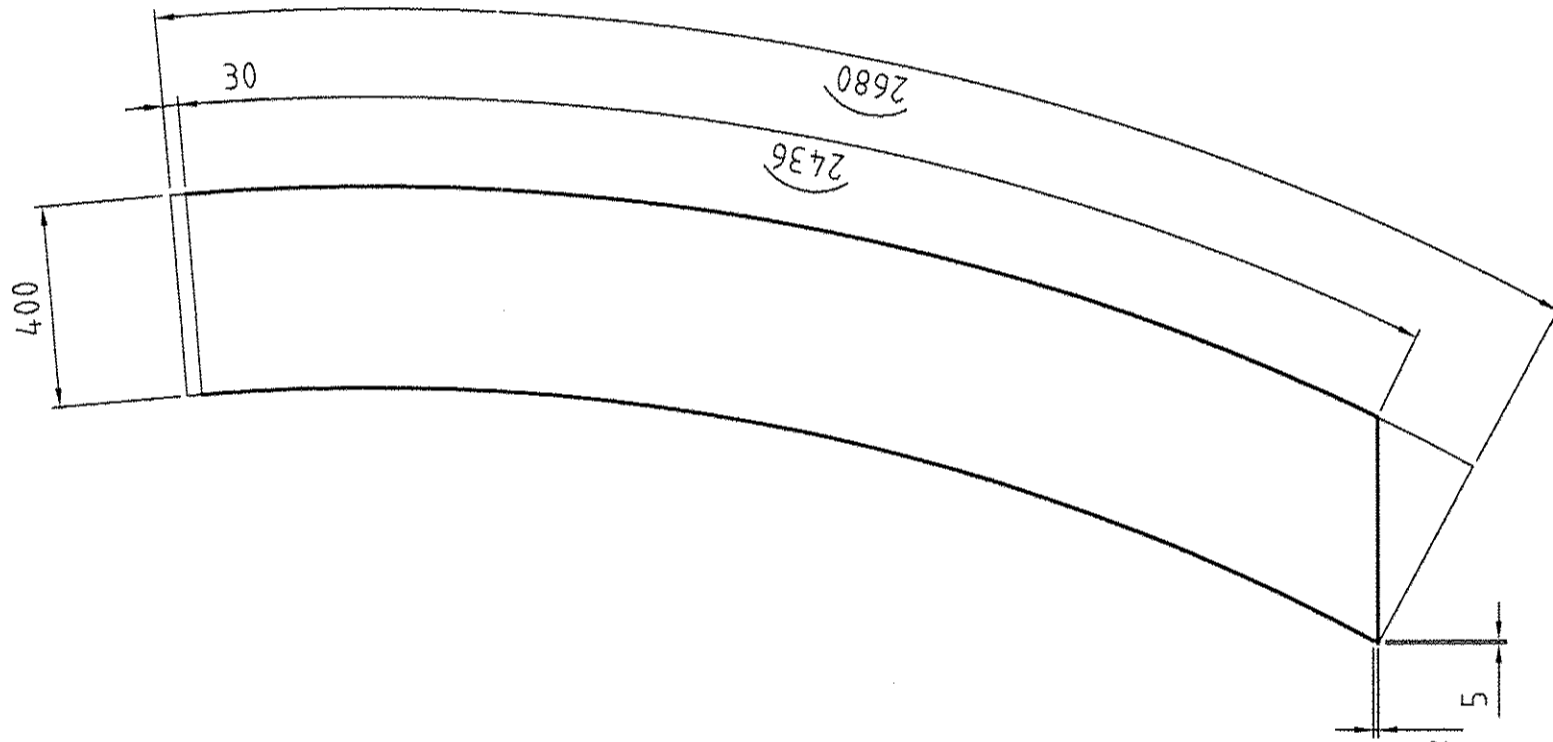
2 x fertigen



Detail Pos. 136 (VK3)

41:15

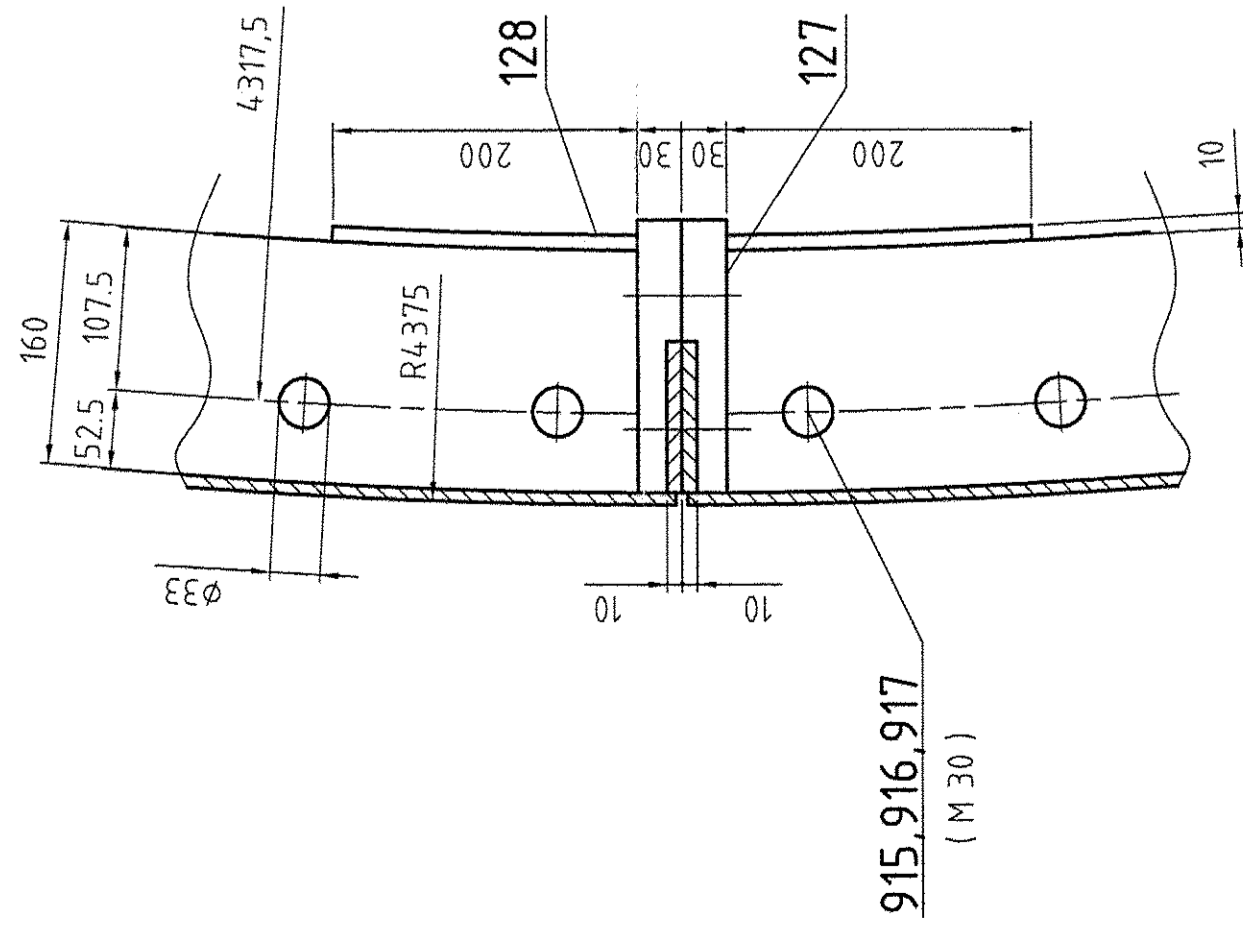
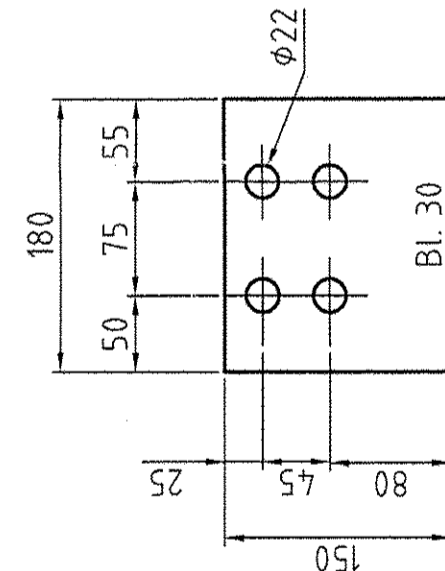
2 x fertigen



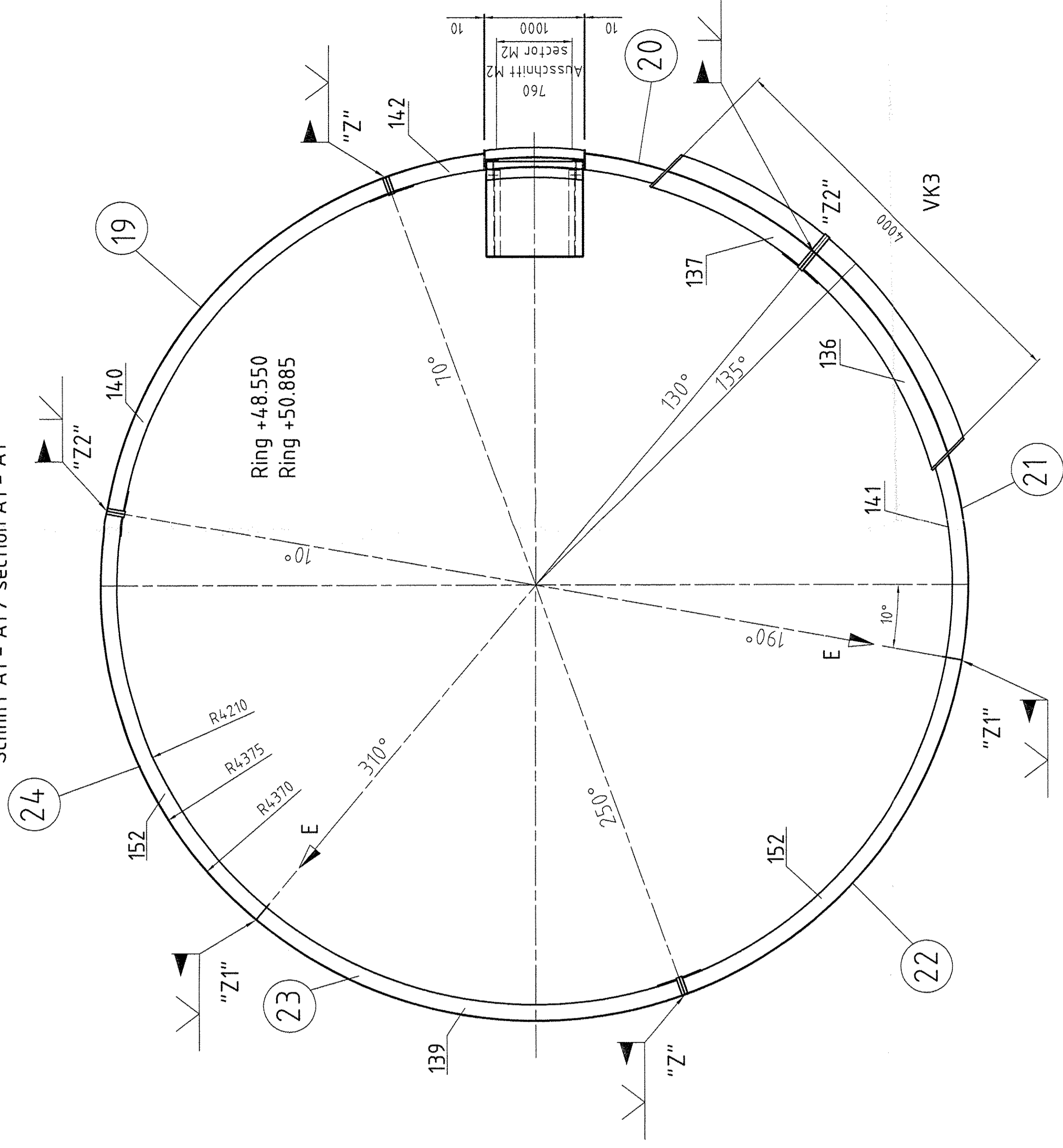
Pos./item 127

 Σ

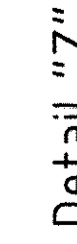
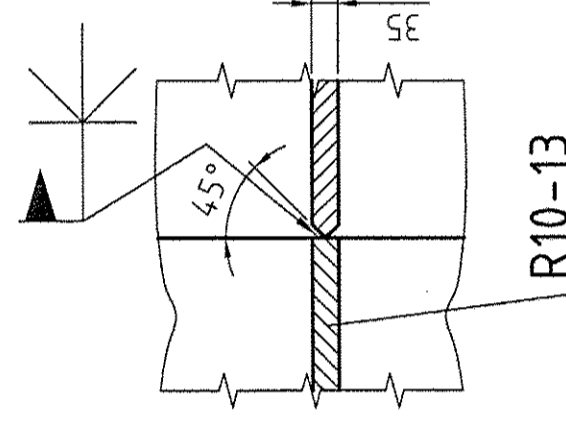
8x fertigen / 8x produce



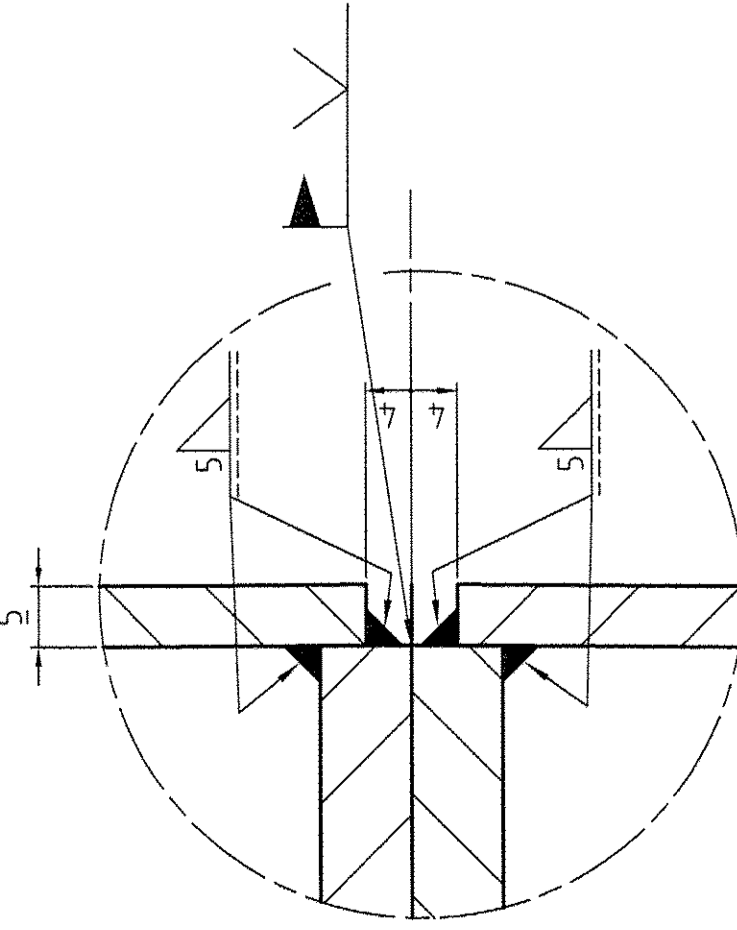
Schnitt A1 - A1 / section A1 - A1



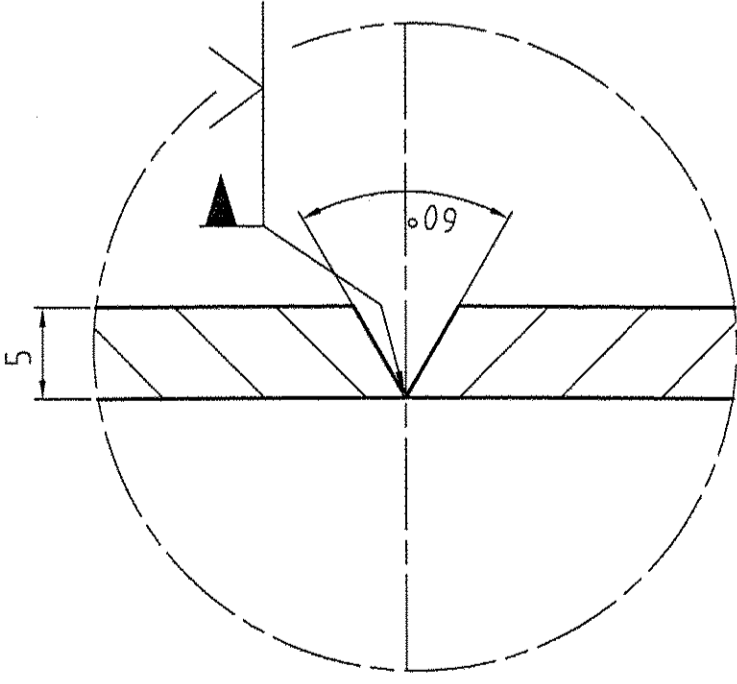
Ansicht / view E
M 1:10

 $M = 10$ 

三

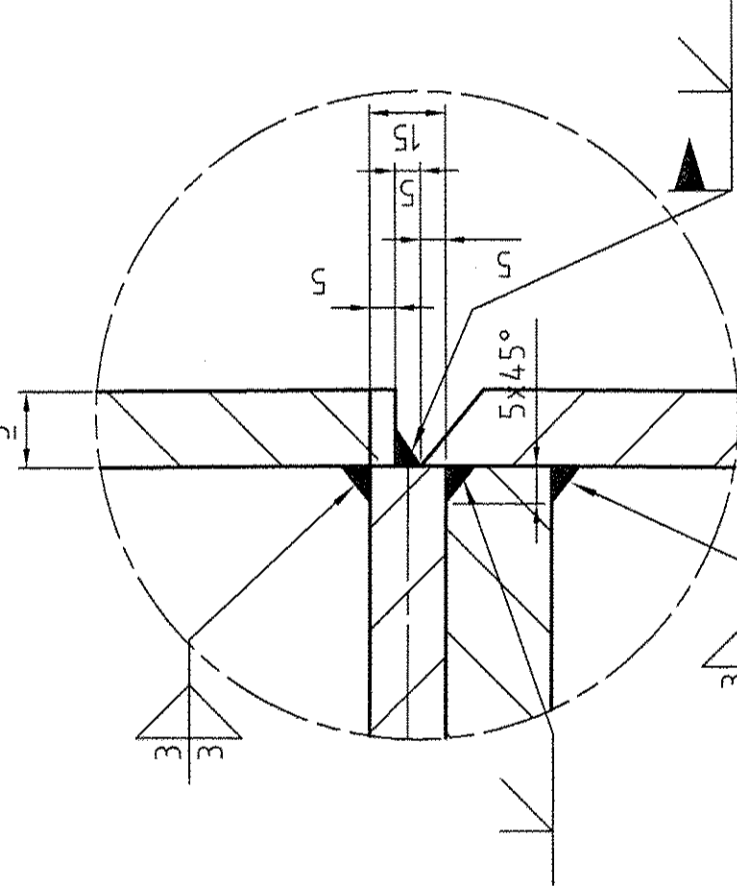


Detail "Z.1"

$$\sum_{i=1}^n$$


Detail "Z.2"

三三



		Zzeichnung gehört zu: Drawing belongs to:	05-101-400
		Hierzu gehört Zeichnung:	05-101-401 bis -407; 05-101-409 bis -415 See also drawing:
		Werkstoff :	Alle mit Sauerstoff in Berührung kommenden Teile öl- und fettfrei
		Werkstückdaten	Masse kg
			Ähnl. : Ers.f.: Ers.d.:
		ISO-Methode E	AIR LIQUIDE™
	Bearb.	Datum : Name : Gepr.:	
		Bezug / Projekt :	K70101 ASU No. 9 Kosice
		Benennung :	Coldbox (Pos. 19-24) +48,00m to +62,00m
Air Liquide AGS GmbH		Blatt-Nr. :	F Z Blattzahl :
		DATE:	HISTORY FILE:
		17.03.05	05-101-408-3.dwg
		JOB CODE:	ORIGINAL FORMAT:
		REFERENCE:	SHEET: 133 1/3 DIN A1
		TITLE:	OF 5 SHEETS
REPLACES:	Replaces:	DRAWING NO.:	REV.
REPLACED BY:	05-101-408		1